

SwarmDiver™

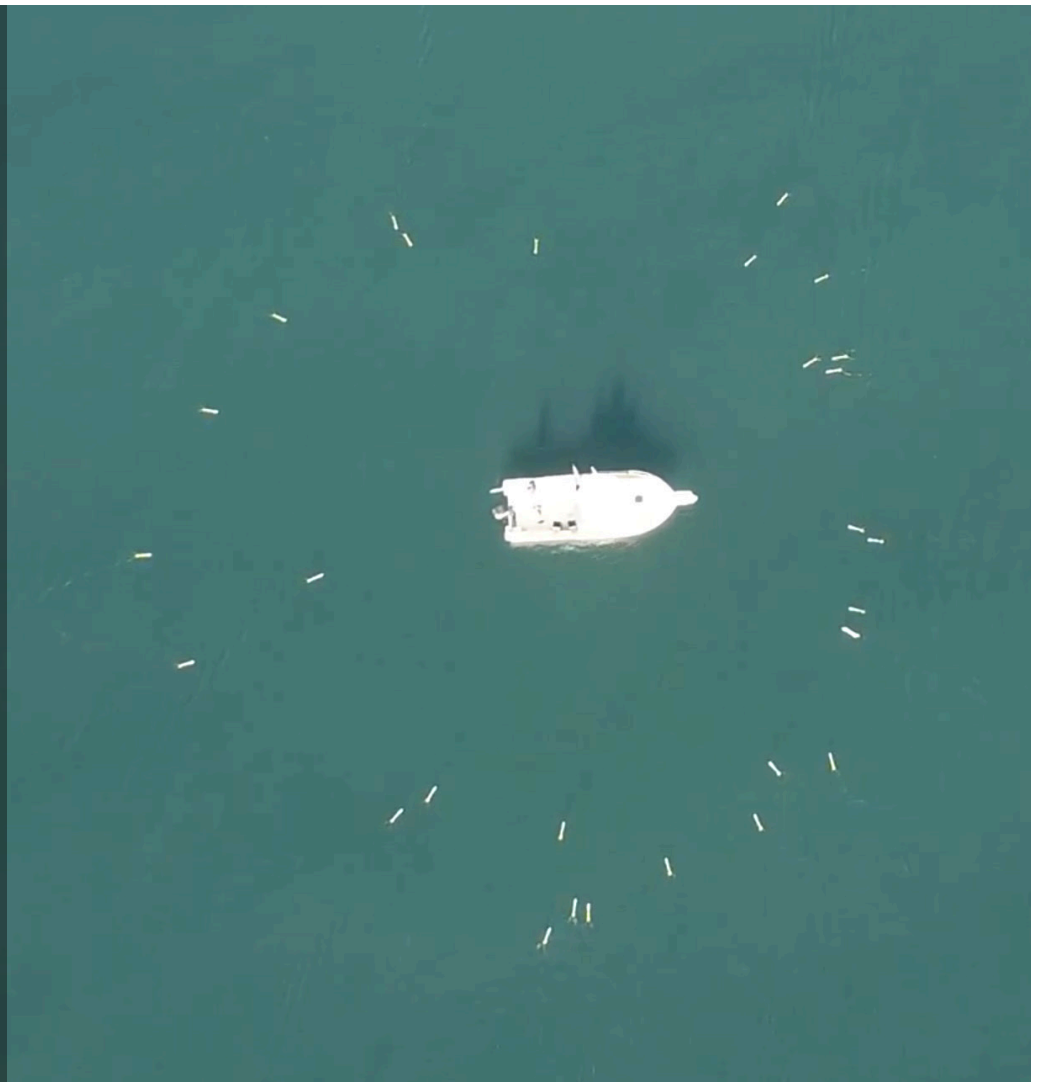
Micro USV/UUV



The Aquabotix SwarmDiver™ is smart, small and easily deployable. Multiple SwarmDivers can function simultaneously as a single coordinated entity, be easily controlled via one operator on the surface, and perform dives on command to collect valuable intelligence. The SwarmDiver's innovative design delivers rugged reliability and unsurpassed accuracy—making it an essential and cost-effective solution for applications requiring specialized sensor payloads in defense, oceanography, aquaculture, research and hydrographic survey.

Product Features

- Autonomous or Manual Deployment from Any Platform of Opportunity
- Easy Recovery
- Vertical Dive Capability
- 50m Dive Depth
- Wireless Data Feedback Upon Surfacing
- High-Accuracy Temperature & Pressure Sensor
- Additional Payload Sensors Available
- Multi-Constellation GPS +/-1m Location Accuracy
- Operable in Groups for Synoptic Data Gathering
- Sustained Surf Zone Operation



Specifications subject to change.

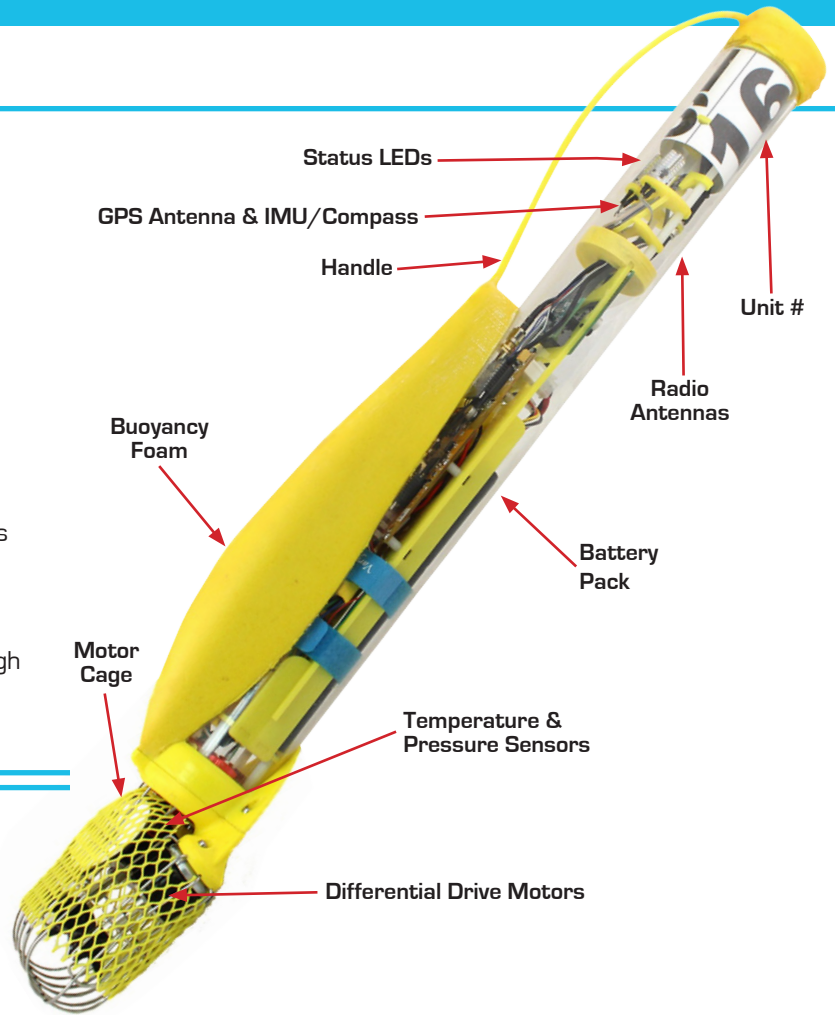
info@aquabotix.com | +1 508 676 1000 | 21 Father DeValles Blvd. Suite 106 | Fall River MA 02723 | www.aquabotix.com

©2018 Aquabotix Technology Corporation 04.18

SwarmDiver Technical Specifications

Length	0.75m / 29.5"
Enclosure OD	57mm / 2.25"
Beam	0.13m / 5.1"
Draft	0.45m / 17.7"
Weight	1.7kg / 3.7lb
Dive Depth	50m / 164'
Propulsion	2x brushless DC motors
Speed	Up to 2.2m/s / 4.3knots
Endurance	Up to 2.5hours / 7km / 4.3miles
Communications	Dual radio (900MHz / 2.4 GHz)
Sensor Expansion *	2 x I2C 2 x SPI 2 x UART 1 x cable pass-through

*Additional customization options are available.



Applications

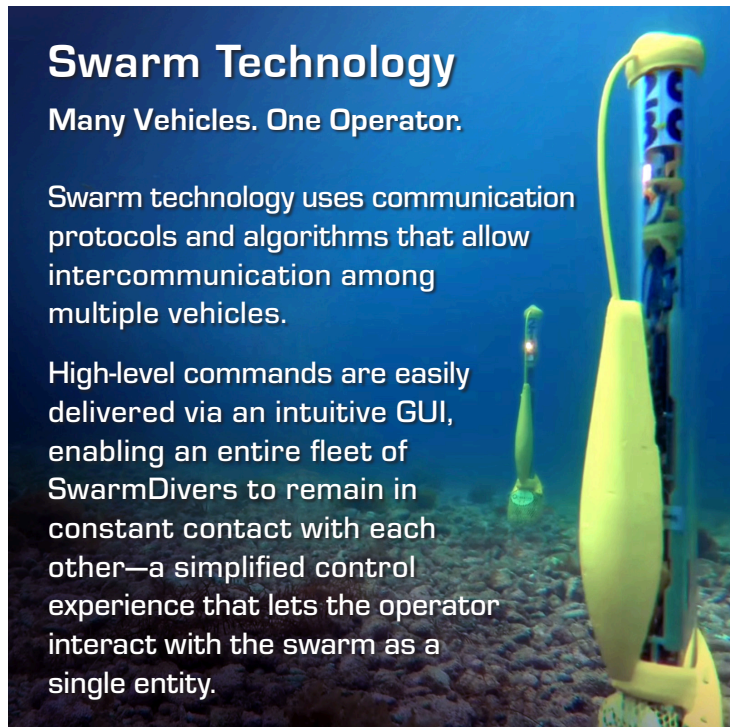
- Environmental Monitoring
- Plume Tracking
- 3D Synoptic Data Gathering
- Mobile Buoy Markers
- Autonomous Depth Sounding

Swarm Technology

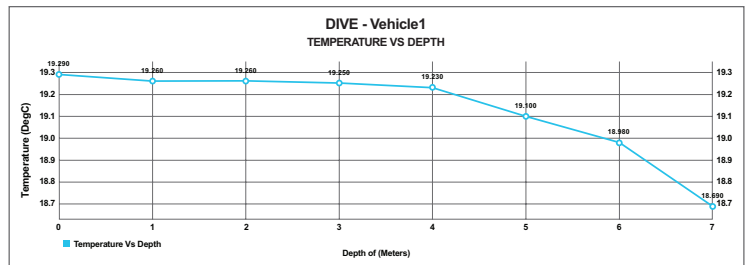
Many Vehicles. One Operator.

Swarm technology uses communication protocols and algorithms that allow intercommunication among multiple vehicles.

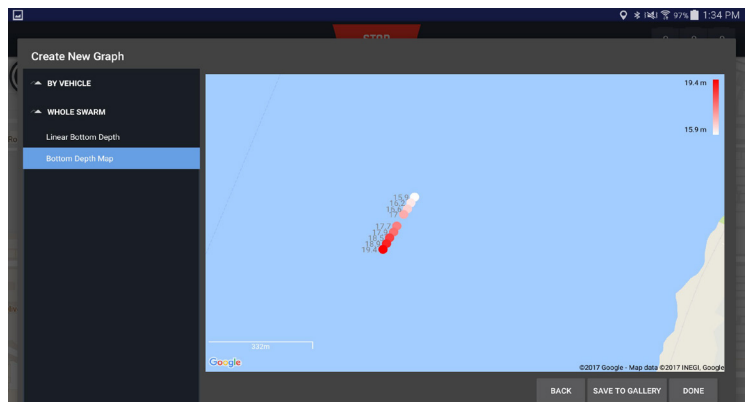
High-level commands are easily delivered via an intuitive GUI, enabling an entire fleet of SwarmDivers to remain in constant contact with each other—a simplified control experience that lets the operator interact with the swarm as a single entity.



Single Vehicle Transmitted Dive Data



Multi-Vehicle Transmitted Dive Data



Specifications subject to change.